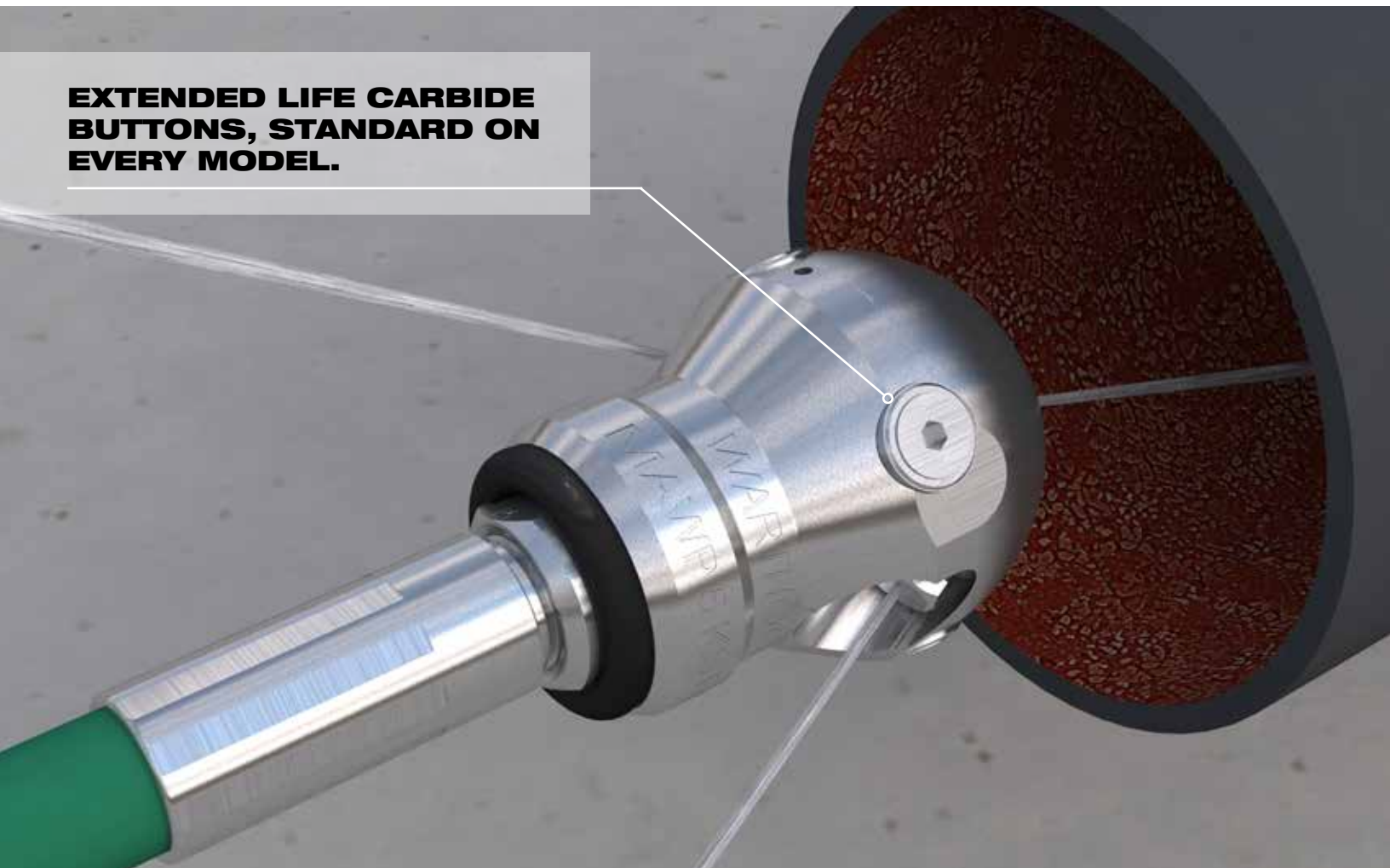




**EXTENDED LIFE CARBIDE BUTTONS, STANDARD ON EVERY MODEL.**



## WT-3/8-C CLASSIC

3"-6" (76-152 mm) Lines with Elbows

Our smaller Classic series models can negotiate elbows and clean-outs commonly found in laterals at homes, buildings, restaurants and other light commercial facilities. This tool is most commonly used on small capacity pumps and cart jettors. Also an excellent choice for cutting roots, clearing ice and removing blockages.

Pipes made of cast iron and those that have sand or silt can act as abrasive agents that can aggressively wear out the tool. We've added permanent carbide buttons to the WT-3/8-C to increase head life. Our carbide buttons are available in all offsets and add up to 5 times the life compared to previous WT-3/8 models. It also features replaceable AP2 nozzles.

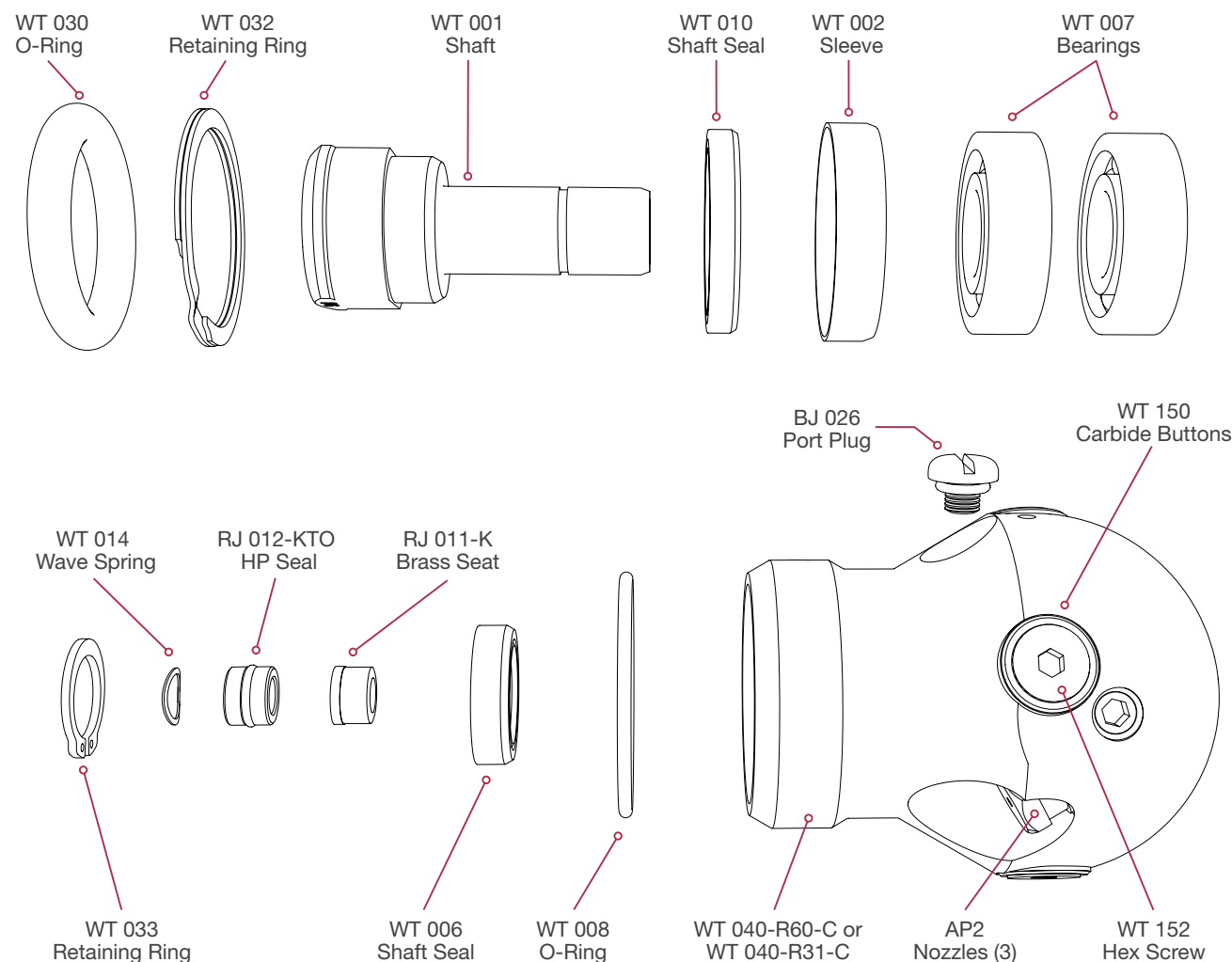
<b>WT-3/8-C</b>	Up to 5k psi (350 bar)
3"-6" Lines (76-152 mm)	5-12 gpm Flows (20-45 l/min)
	Classic Workhorse Model

### WT-3/8-C Specifications

<b>MAXIMUM PRESSURE</b>	5k psi 350 bar
<b>OPERATING PRESSURE</b>	1500-5k psi 100-350 bar
<b>ROTATION SPEED</b>	300-500 rpm
<b>FLOW</b>	5-12 gpm 20-45 l/min
<b>FLOW RATING</b>	0.75 Cv
<b>PULLING FORCE</b>	5-20 lb 22-90 N
<b>INLET CONNECTION</b>	3/8 NPT or BSPP
<b>TOOL DIAMETER</b>	1.9 in. 48 mm
<b>LENGTH</b>	3.0 in. 76 mm
<b>NOZZLE PORTS</b>	3 x 1/8 NPT
<b>WEIGHT COMPLETE</b>	1.2 lb .54 kg

## WT-3/8-C

Exploded View - Part Names and Numbers



### Maintenance & Overhaul Kits

#### WT 600 • SERVICE KIT

- (1) BC 410 Syringe Assembly
- (1) BJ 026 Port Plug
- (1) BJ 048-S Visc. Fluid, 6oz.
- (1) BJ 062-S Antiseize, 2g
- (1) GP 025-P2SS Hex Socket Plug
- (1) RJ 011-K Brass Seat
- (1) RJ 012-KTO HP Seal & O-Ring
- (1) WT 014 Wave Spring

#### WT 602 • SEAL KIT

- (1) RJ 011-K Brass Seat
- (1) RJ 012-KTO HP Seal & O-Ring
- (1) WT 014 Wave Spring

#### WT 610 • OVERHAUL KIT

- (1) BJ 026 Port Plug
- (1) BJ 048-S Visc. Fluid, 6oz.
- (1) RJ 011-K Brass Seat
- (1) RJ 012-KTO HP Seal & O-Ring
- (1) WT 006 Seal
- (2) WT 007 Bearing, Ball
- (1) WT 008 O-Ring
- (1) WT 010 Seal
- (1) WT 014 Wave Spring
- (1) WT 032 Retaining Ring
- (1) WT 030 O-Ring

#### WT 612 • TOOL KIT

- (1) BA 100 Retaining Ring Pliers
- (1) WT 105 Tool