



**THE TOOL OF CHOICE FOR SMALLER MUNICIPAL LINES & LARGER RESIDENTIAL LINES**



**TECH TIP:** IF YOU CURRENTLY OWN A WHR MAGNUM, THE HEAD CAN BE REPLACED WITH THE SWITCHER HEAD (WHR 060) TO EXPAND USAGE

# WHR MAGNUM

6"-18" (152-457 mm) Lines

The Warthog WHR Magnum is designed for mid-size pipes and lines, with the proven power and durability of the Magnum line of sewer tools.

- Optimized speed control mechanism extends maintenance intervals
- Latest seal technology effectively handles dirty or recycled water
- Flush style head protects front shaft seals for longer fluid life
- Carbide nozzles generate higher quality jets
- Streamlined design improves forward and reverse movement through pipe
- Hardened steel centralizer with 4x longer life
- New jet angles increase cleaning performance while maintaining pulling force
- Replaceable fins are easily changed without opening tool body

## WHR MAGNUM

6"-18" Lines (152-457 mm)

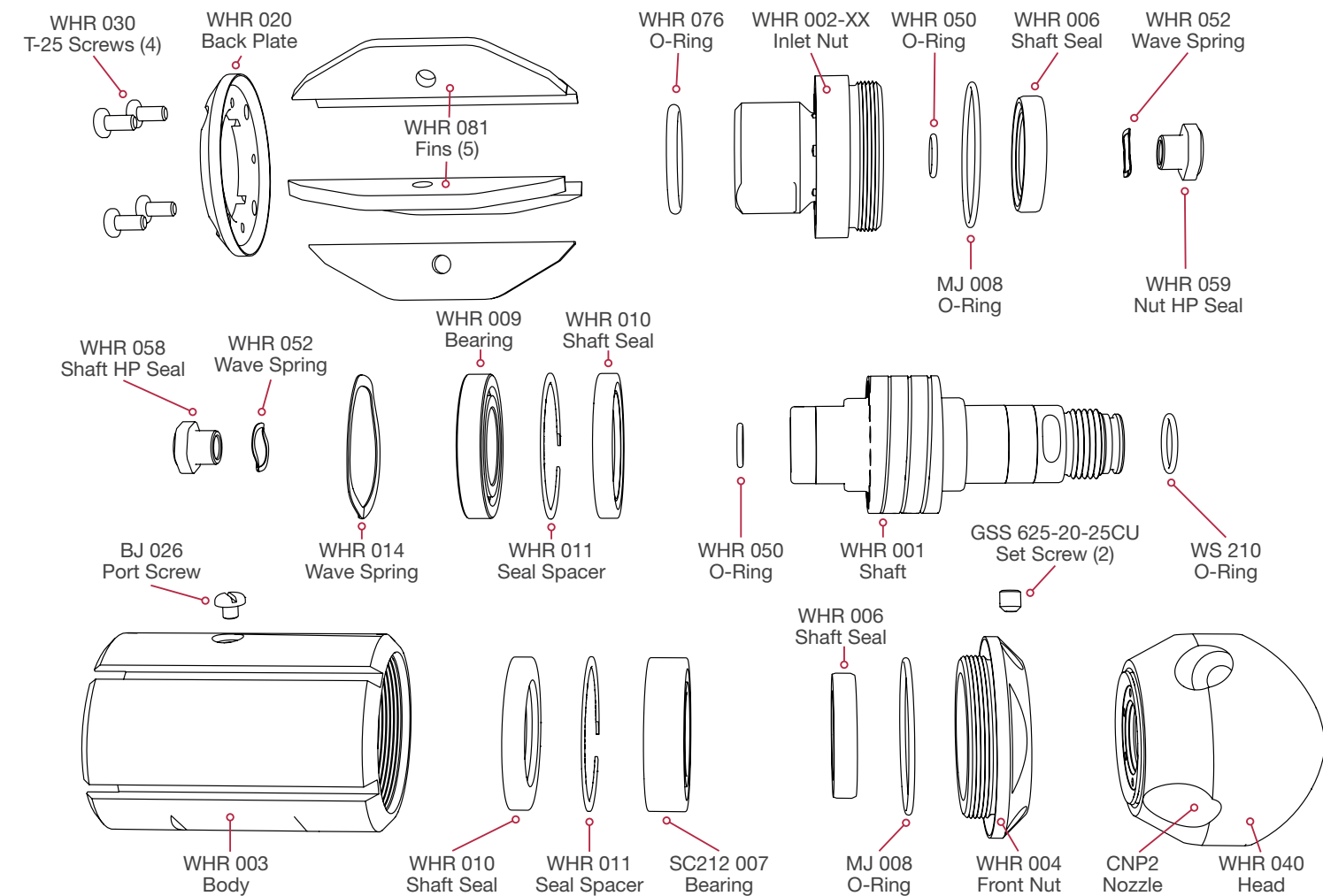
Up to 8k psi (550 bar)
14-50 gpm Flows (60-190 l/min)
Two Inlet Options Available

## WHR Magnum Specifications

<b>MAXIMUM PRESSURE</b>	8k psi	550 bar
<b>OPERATING PRESSURE</b>	1500-8k psi	100-550 bar
<b>ROTATION SPEED</b>	150-400 rpm	
<b>FLOW</b>	14-50 gpm	60-190 l/min
<b>FLOW RATING</b>	2.6 Cv	
<b>PULLING FORCE</b>	30-90 lb	13-41 kg
<b>INLET CONNECTION</b>	1/2 NPT or BSPP, 3/4 NPT or BSPP	
<b>NOZZLE PORTS</b>	5 x 1/8 NPT	
<b>TOOL DIAMETER INCL. CENT.</b>	3.625 in.	92 mm
<b>LENGTH</b>	7.25 in.	184 mm
<b>WEIGHT COMPLETE</b>	6.75 lb	3 kg

# WHR MAGNUM

Exploded View - Part Names and Numbers



## Maintenance & Overhaul Kits

### WHR 600 • SERVICE KIT

- (1) BJ 048-M Visc Fluid, 6oz
- (1) BJ 062-S Antiseize, 2g
- (1) GP 049 Grease Syringe
- (2) GSS 625-20-25CU Set Screw
- (2) MJ 008 Nut O-Ring
- (1) SC212 007 Front Bearing
- (2) WHR 006 Outer Shaft Seal
- (1) WHR 009 Rear Bearing
- (2) WHR 010 Inner Shaft Seal
- (2) WHR 011 Seal Spacer
- (2) WHR 050 O-Ring
- (1) WHR 076 Weep Seal O-Ring
- (4) WHR 030 Torx Screws
- (1) WS 210 O-Ring

### WHR 602 • HP SEAL KIT

- (1) BJ 062-S Antiseize, 2g
- (2) WHR 050 O-Ring
- (2) WHR 052 HP Wave Spring
- (1) WHR 058 HP Shaft Seal
- (1) WHR 059 HP Nut Seal
- (2) BJ 026 Port Plug
- (1) BJ 048-M Visc Fluid, 6oz
- (1) BJ 062-S Antiseize, 2g
- (1) GP 025-P2SS Hex Plug
- (1) GP 049 Grease Syringe
- (2) GSS 625-20-25CU Set Screw
- (2) MJ 008 Nut O-Ring
- (1) SC212 007 Front Bearing

### (2) WHR 006

- Shaft Seal – Outer
- (1) WHR 009 Rear Bearing
- (2) WHR 010 Shaft Seal – Inner
- (2) WHR 011 Seal Spacer
- (1) WHR 014 Bearing Wave Spring
- (4) WHR 030 Torx Screws
- (2) WHR 050 O-Ring
- (2) WHR 052 HP Wave Spring
- (1) WHR 058 HP Shaft Seal
- (1) WHR 059 HP Nut Seal
- (1) WHR 076 Weep Seal O-Ring
- (1) WS 210 O-Ring
- (1) WGR 180 Torx L-Wrench

### WHR 612 • TOOL KIT

- (1) BA 481 Bearing Removal Tool
- (1) WGR 180 Torx L-Wrench
- (1) WHR 181 Removal Press Tube
- (1) WHR 182 Install Press Tube
- (1) WHR 183 Hex Tool
- (1) WHR 184 HP Seal Install Tool
- (1) WGR 186 HP Seal Puller
- (1) WHR 187 HP Seal Puller Pin