



**OPERATING WATERBLASTING EQUIPMENT  
CAN BE POTENTIALLY HAZARDOUS.  
SEE PAGE 97 FOR IMPORTANT SAFETY INFORMATION**

# STRAIGHT PIPE CLEANING

## BJV CENTRALIZERS

Centering Devices for Any Application



### BJ-070 SKID STYLE

Utilizes interchangeable plastic runners which can be easily replaced. Works well in elbows and can effectively clean up to 12 in. (305 mm) diameter pipes and works with all BJV models.

**Tool not included.**

Skid Sizes (Diameter)		
<b>BJ 070-6</b>	6 in.	150 mm
<b>BJ 070-8</b>	8 in.	200 mm
<b>BJ 070-10</b>	10 in.	250 mm
<b>BJ 070-12</b>	12 in.	300 mm



### BJ-286 CENTRALIZER

Designed for straight pipe runs only, these six-wheel centralizers feature an adjustable, scissor-style aluminum frame and tough plastic wheels. They are compatible with the entire BJV line of rotary tools.

**Tool not included.**

Centralizer Sizes (Diameter)	Weight
<b>BJ 286-S</b> 9–18 in. 230–460 mm	20 lb 9 kg
<b>BJ 286-M</b> 13–40 in. 330–1000 mm	32 lb 15 kg
<b>BJ 286-L</b> 16–60 in. 410–1500 mm	40 lb 18 kg

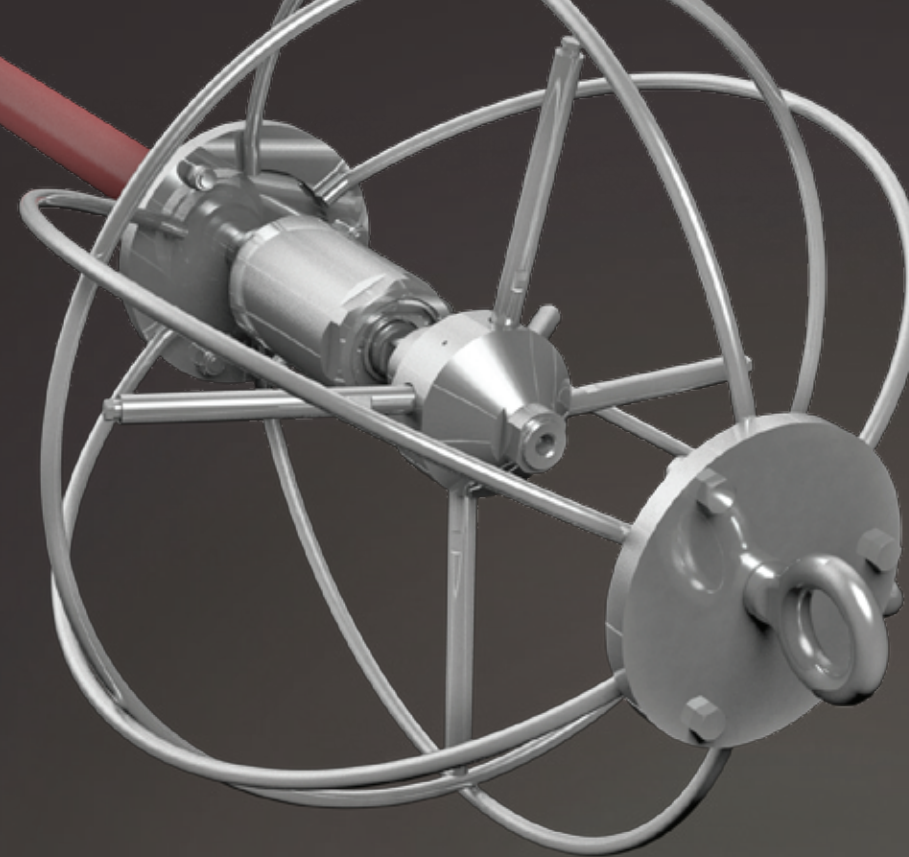


### BJ-288 FOR PIPES WITH BENDS

With adjustable, telescopic steel legs and tough plastic wheels, these eight-wheel centralizers are designed to travel through elbows easily and are compatible with the entire BJV line of rotary tools.

**Tool not included.**

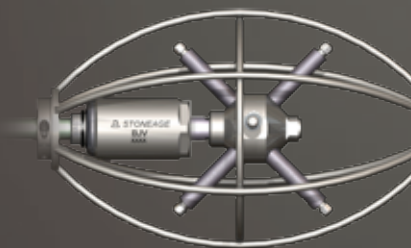
Centralizer Sizes (Diameter)	Weight
<b>BJ 288-S</b> 16–21 in. 410–530 mm	12 lb 5.5 kg
<b>BJ 288-M</b> 22–29 in. 560–740 mm	13 lb 5.9 kg
<b>BJ 288-L</b> 30–37 in. 770–940 mm	16 lb 7.3 kg



## CAGE-STYLE CENTRALIZERS

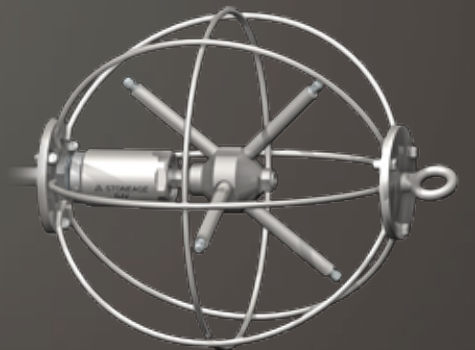
We recommend using stainless steel centralizers when negotiating complex piping arrangements and removing built-up debris while maintaining jet rotation.

**BJ 408-MP12/H9  
BJ 408-P12/M24**



Different inlet plates are available for all models.

**BJ 100-SS  
BJ 100-SS-MP**



Different collar sizes are available for all models.

Part ID	BJ 408-MP12/H9	BJ 408-P12/M24*	BJ 100-SS	BJ 100-SS-MP
<b>DIAMETER</b>	12 in. 300 mm	12 in. 300 mm	20 in. 510 mm	20 in. 510 mm
<b>LENGTH</b>	20 in. 510 mm	20 in. 510 mm	24 in. 610 mm	24 in. 610 mm
<b>WEIGHT</b>	10 lb 4.5 kg	10 lb 4.5 kg	11 lb 5.0 kg	11 lb 5.0 kg

\*Requires specified extension nipple on the inlet