

## CENTRALIZERS

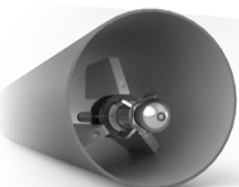
A centralizer helps to protect the tool as it passes through the pipe and balances jet standoff distance for more consistent cleaning. In cases where pipe size is more than 1.5 times the diameter of the tool, a centralizer is an important safety device, preventing the tool from turning around and thrusting backwards out of the pipe.



**6-WHEEL ADJUSTABLE CENTRALIZER**  
**WG 286-M-P16 – DESIGNED FOR STRAIGHT PIPES**



**8-WHEEL ADJUSTABLE CENTRALIZER**  
**WG 288-M-P16 – DESIGNED FOR PIPES WITH BENDS**



**POLY-FIN CENTRALIZER**  
**WG 070**



**SUPER CENTRALIZER**  
**WS 084 – 4.5" DIAMETER** For 5" (127 mm) minimum pipe ID  
**WH 085 – 5.5" DIAMETER** For 6" (152 mm) minimum pipe ID  
**WG 085 – 7" DIAMETER** For 8" (203 mm) minimum pipe ID

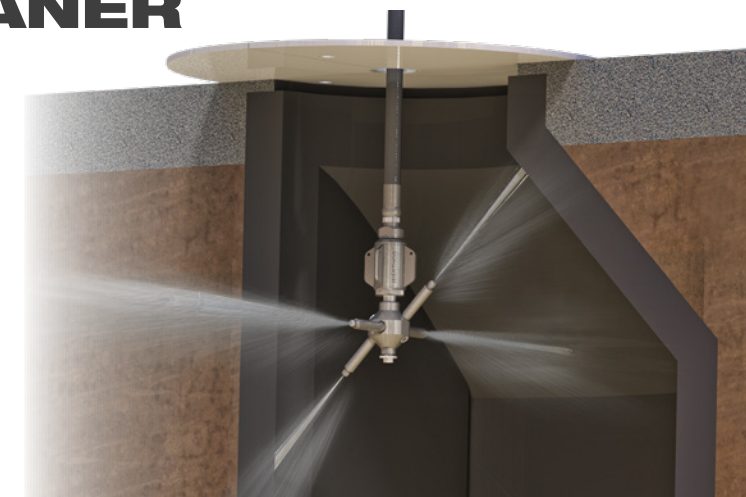
*Contact your dealer today to learn more about our accessories so you can maximize the cleaning effectiveness of Warthog sewer nozzles for specific job requirements.*

## MANHOLE CLEANER

**MANHOLE SIZE: 18-36" (457-914 MM)**  
**INLET: 1" NPT OR BSPP**

TURN YOUR WARTHOG PIPE CLEANING TOOL INTO AN EFFECTIVE MANHOLE CLEANER!

- Fast and efficient cleaning
- Safer than manual cleaning methods



The benefit of using this design is that the jets are directed at the manhole walls at all times — making it much more effective and safer than 3D style tools or manual methods.

This conversion simply requires exchanging the standard WG 040 head with the Manhole Cleaner head kit.

**STONEAGE RECOMMENDS THE USE OF A COVER PLATE FOR INCREASED SAFETY.**  
**SEE PAGE 22 FOR IMPORTANT SAFETY INFORMATION.**

HEAD OPTION	INLET	FLOW RANGE		PRESSURE		MODEL
		GPM	LPM	PSI	BAR	
STANDARD	1" NPT OR BSPP	50-80	189-303	1200-5K	83-345	WG-MH