

HOSES/LANCES 40K PSI (2800 BAR)

THREAD LUBRICANTS

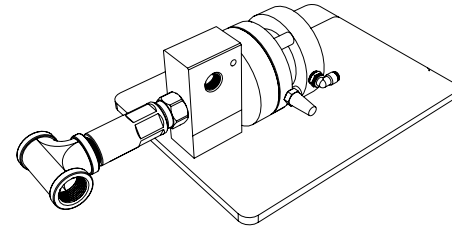
Protect the threads on water jetting connections from galling or seizing up.



PART NO. GP 043
Blue Goop Thread Lubricant 2 oz. Tube

40K AIR-OPERATED DUMP VALVES

The Air-Operated Dump Valve allows an operator to remotely control pressure in cleaning applications from 40k psi (2800 bar). When air is sent to the cylinder, the valve closes and allows the system to build pressure. The valve opens when the air is exhausted, reducing system pressure to near atmospheric.

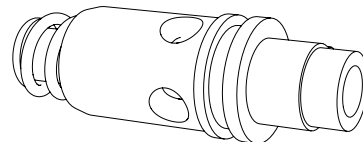


PART NO.	DESCRIPTION
ACDA 61040006-K	Kit, Dump Valve Assembly w/ Air Hose and Fittings, 40k, w/ Base Plate

HIGH PRESSURE REPLACEMENT CARTRIDGES

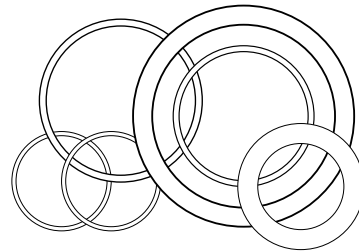
Cartridge Style Design allows dump valve to be rebuilt in under a minute with no special tools.

PART NO.	DESCRIPTION	PRESSURE	
		psi	bar
ACRC 60040001	40k PRV, J/S 53725	40k	2760
ACRC 60040005	40k Hand/Foot, J/S 53475	40k	2760
ACRC 60300001	40k GDWJ Hand/Foot, GDWJ 77700315	40k	2760



ACCESSORY O-RINGS FOR CARTRIDGES

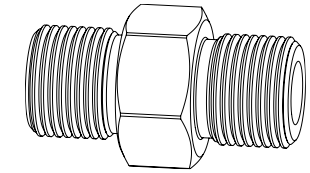
PART NO.	DESCRIPTION
ACOR 30001018	O-Ring 22-17046
ACOR 30001029	O-Ring
ACOR 30001120	O-Ring
ACOR 30001122	O-RING J/S 26776
ACOR 30001218	O-Ring GDWJ 22-74207
ACOR 30003018BU	B/U Ring GDWJ 22-17047
ACOR 30003120BU	Back Up Ring
ACOR 30003122BU	Back Up Ring
ACOR 30003218BU	Back Up Ring



FITTINGS 40K PSI (2800 BAR)

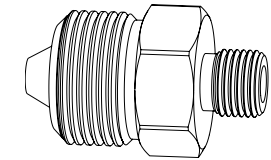
TYPE M CONNECTORS

PART NO.	CONNECTION TYPE		MAX. OPERATING PRESSURE	
	Connection 1	Connection 2	psi	bar
AF 060-060	9/16" Type M Male	9/16" Type M Male	50k	3450
AF 060-062	9/16" Type M Male	7/8" Type M Male	50k	3450
AF 062-062	7/8" Type M Male	7/8" Type M Male	50k	3450
AF 062-063	7/8" Type M Male	1" Type M Male	50k	3450
AF 060-069	1-1/8" Type M Male	9/16" Type M Male	50k	3450
AF 062-069	1-1/8" Type M Male	7/8" Type M Male	50k	3450
AF069-069	1-1/8" Type M Male	1-1/8" Type M Male	50k	3450



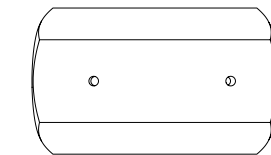
TYPE M MALE TO HIGH PRESSURE MALE CONNECTORS

PART NO.	CONNECTION TYPE		MAX. OPERATING PRESSURE	
	Connection 1	Connection 2	psi	bar
AF 060-H4	9/16" Type M Male	1/4" HP Male	50k	3450
AF 060-H6	9/16" Type M Male	3/8" HP Male	50k	3450
AF 060-H9	9/16" Type M Male	9/16" HP Male	50k	3450
AF 061-H9	3/4" Type M Male	9/16" HP Male	50k	3450
AF 062-H6	7/8" Type M Male	3/8" HP Male	50k	3450
AF 062-H9	7/8" Type M Male	9/16" HP Male	50k	3450
AF 069-H9	1-1/8" Type M Male	9/16" HP Male	50k	3450



HIGH PRESSURE STRAIGHT COUPLINGS

PART NO.	CONNECTION TYPE		MAX. OPERATING PRESSURE	
	Connection 1	Connection 2	psi	bar
AF 073-H4	1/4" HP Female	1/4" HP Female	50k	3450
AF 073-H4H6	1/4" HP Female	3/8" HP Female	50k	3450
AF 073-H4H9	1/4" HP Female	9/16" HP Female	50k	3450
AF 073-H6	3/8" HP Female	3/8" HP Female	50k	3450
AF 073-H6H9	3/8" HP Female	9/16" HP Female	50k	3450
AF 073-H9	9/16" HP Female	9/16" HP Female	50k	3450



WITH COLLAR AND GLANDS

PART NO.	CONNECTION TYPE		MAX. OPERATING PRESSURE	
	Connection 1	Connection 2	psi	bar
AF 173-H4	1/4" HP Female	1/4" HP Female	50k	3450
AF 173-H4H6	1/4" HP Female	3/8" HP Female	50k	3450
AF 173-H4H9	1/4" HP Female	9/16" HP Female	50k	3450
AF 173-H6	3/8" HP Female	3/8" HP Female	50k	3450
AF 173-H6H9	3/8" HP Female	9/16" HP Female	50k	3450
AF 173-H9	9/16" HP Female	9/16" HP Female	50k	3450

