



WATERBLAST ACCESSORIES

BACKOUT PREVENTERS

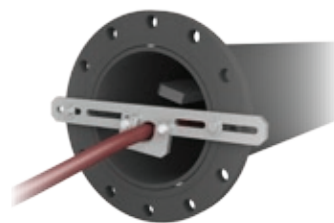
Backout preventers increase safety by keeping the tool from backing out of the pipe. Several options are available including fixtures for small diameter pipes, pipes with various flange bolt circle diameters, and adapters for pipes with no-flange entry.



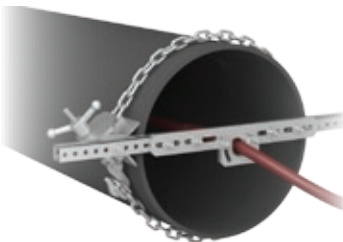
BJ 305
Pipe Sizes 2-6 in. (51-150 mm)
Hose Sizes (ID) 0.12-0.32 in. (3-8 mm)



BJ 310
Pipe Sizes 4-8 in. (100-200 mm)
For Hose Sizes (ID) 0.32-0.75 in. (8-19 mm)



BJ 320
Pipe Sizes 5-17 in. (130-430 mm)
Hose Sizes (ID) 0.32-0.75 in. (8-19 mm)



BJ 340 NO-FLANGE KIT
Pipe Sizes 15-36 in. (380-910 mm)
For Hose Sizes (ID) 0.32-0.75 in. (8-19 mm)

VE-400™ SAFETY STOP

Tube Cleaning Safety

The VE-400 is designed to protect the operator from a flex-lance exiting the tube sheet during cleaning operations.

The VE-400 adapts to both horizontal and vertical applications and has a wide range of adjustments that easily accommodates different tube sheet sizes.

Weight Complete: 20 lb – (9.0 kg)



WATERBLAST ACCESSORIES

BANSHEE PROTEX™

Vertical Splash Guard

The Banshee ProTex is a lightweight, durable splash guard built to keep operators safe from the potential hazards of manual flex-lancing.

The ProTex is designed specifically for use with Banshee tube cleaning tools and the anti-withdrawal collet easily adjusts to fit many hose sizes. A removable insert easily centers smaller tools and we offer an optional three foot long tube for use with a Stinger.

Weight Complete: 12 lb – (5.5 kg)
Hose Range: 0.125–1.3 in. – (3–33 mm) OD



HOSE STORAGE REEL

Protect your hoses while improving job site safety. The HWB safely stores hoses, easily moves from job to job and reduces trip hazards.

Featuring StoneAge rotary couplings, these reels can accommodate pressures up to 40k psi*. Air or hydraulic powered rewind systems available. Hose not included.

Diameter	32 in. 810 mm
Height	34 in. 860 mm
Width	18 in. 460 mm
Hose Bend Radius	10 in. 810 mm
Weight	170 lb 77 kg
HOSE O.D.	MAXIMUM LENGTH
0.8 in. 20 mm	440 ft 134 m
1.0 in. 25 mm	275 ft 84 m
1.2 in. 30 mm	167 ft 51 m



*Hose must be extended prior to use.